



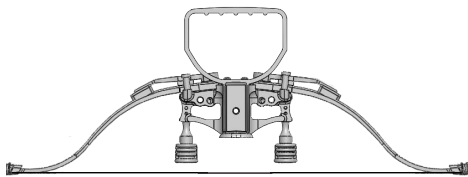
# MICRO Suppressor Assembly Instructions

**Important Information. Read Carefully. Keep this information for future reference.**

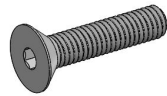
These instructions are for assembly of your new Excalibur MICRO Suppressor crossbow only, please refer to your Owner's Manual for information on how to use, care for and maintain your Excalibur crossbow.

**NOTE: IMAGES MAY NOT BE EXACTLY AS PRODUCED, THEY HAVE BEEN MODIFIED FOR INSTRUCTIONAL PURPOSES.**

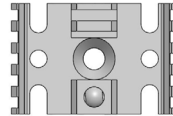
## Step 1: Remove all parts from the box



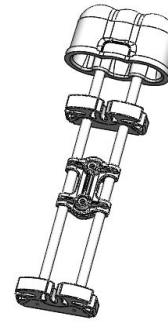
Micro Suppressor Limb Assembly



Riser Bolt 3/8-16 x 1.75"  
#93002



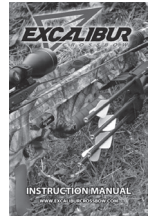
Pic-Rail w/Sling Stud  
#96661



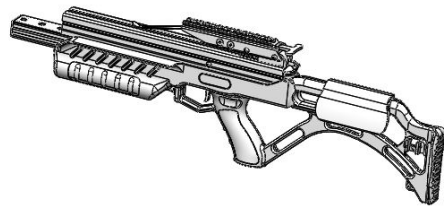
X-Hanger  
3 Arrow Quiver  
#95862



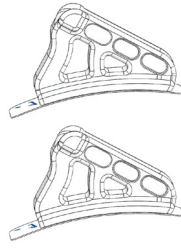
Cocking Aid #93215



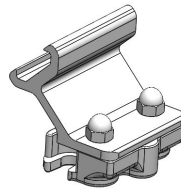
Owner's Manual



Micro Suppressor Mainframe Assembly



Ex-Shox #95912



Pic-Rail Bracket Assembly  
#96663



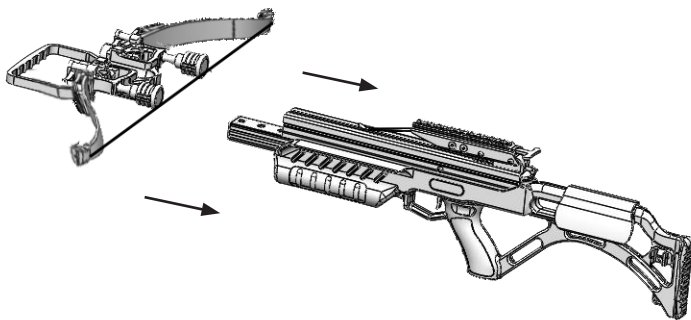
Allen Keys  
7/32" #93001  
1/8" #96833  
3/32" #96834

PACKAGE ALSO INCLUDES: 3 x Quill Arrows, 3 x 150 grain field points, Tac-Zone Illuminated Scope, 30mm scope rings (pre-installed on scope)

**NOTE: SCOPE SHOULD BE MOUNTED LAST FOR EASIER CROSSBOW ASSEMBLY, REFER TO SCOPE INSTRUCTIONS INCLUDED IN THE SCOPE BOX**

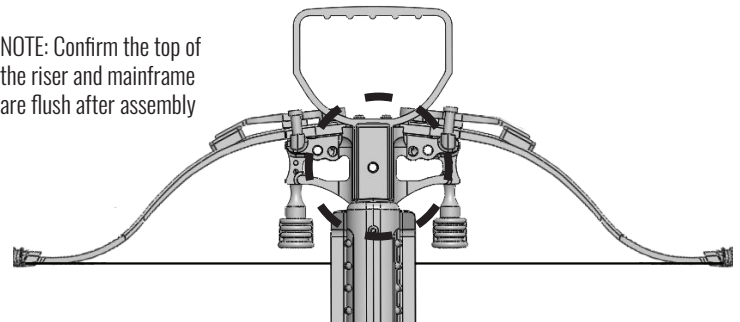
**YOUR EXCALIBUR MICRO SUPPRESSOR COMES EQUIPPED FROM FACTORY WITH THE SOUND DEADENING SYSTEM PRE-INSTALLED.**

**Step 2:** Place the mainframe assembly and limb assembly on a flat surface.

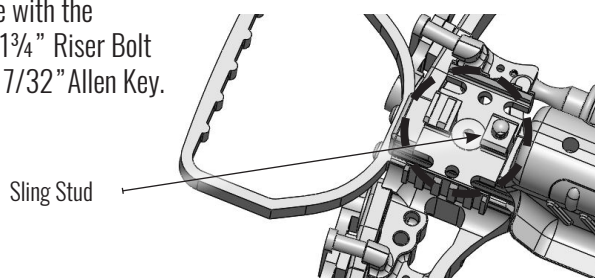


**Step 3:** Locate and align both the mainframe and riser bolt holes as shown. Ensure Mainframe and Limb Assembly sections remain level with each other until joined.

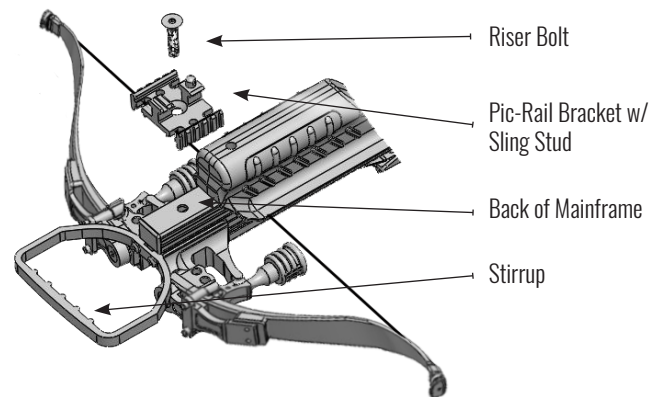
NOTE: Confirm the top of the riser and mainframe are flush after assembly



**Step 4:** Place the Pic-Rail Bracket with sling stud on the back of the mainframe as shown (ensure the sling stud is positioned away from the stirrup). Align the center holes and fasten to the mainframe with the 3/8" - 16x1 3/4" Riser Bolt and Large 7/32" Allen Key.



Sling Stud



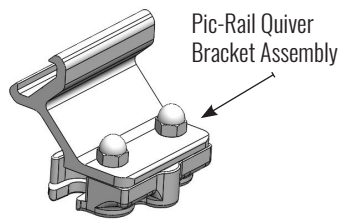
Riser Bolt

Pic-Rail Bracket w/  
Sling Stud

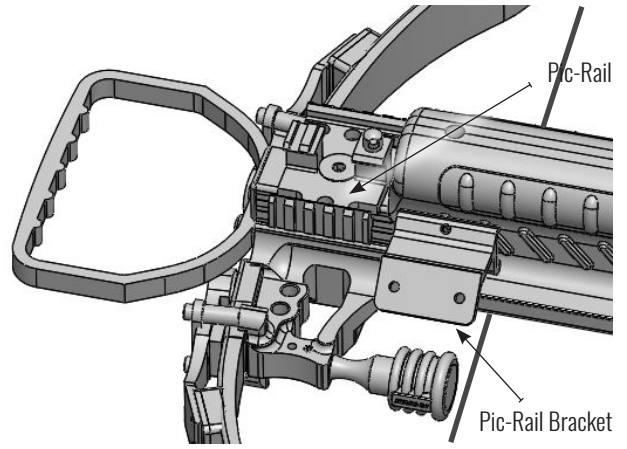
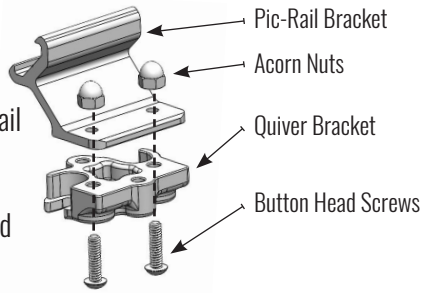
Back of Mainframe

Stirrup

**Step 5:** Pic-Rail Quiver Bracket comes pre-assembled from factory. Slide the Pic-Rail Bracket assembly onto the Pic-Rail. As shown in the image to the far right.

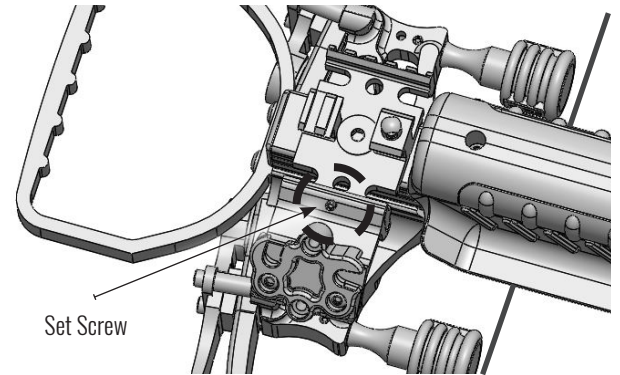


Should your bow come with the Pic-Rail Quiver Bracket NOT assembled, assemble the Pic-Rail Quiver and the X-Hanger Three Arrow Quiver bracket using the 2 Acorn Nuts and 2 Button Head Screws as shown.



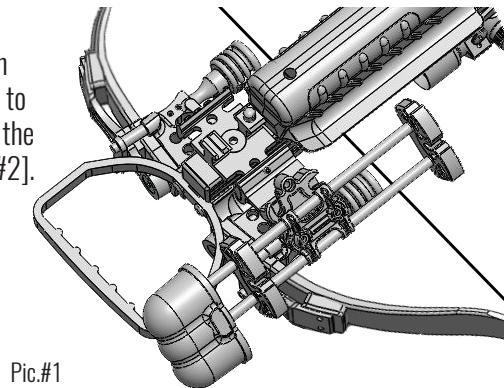
NOTE: For Left Handed shooters, simply install bracket on the opposite side of the Pic-Rail

**Step 6:** Center and tighten set screw using the provided 3/32" Allen key as shown.

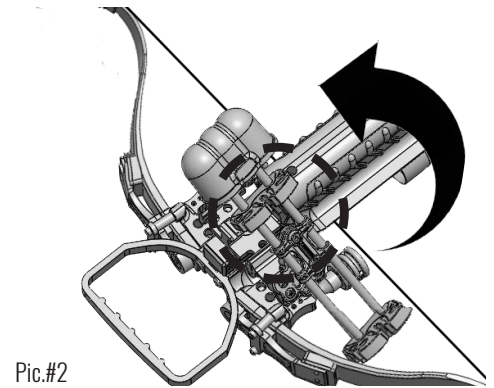


**Step 7:** The X-Hanger 3 Arrow Quiver should be installed parallel to the mainframe as shown in [Pic.#1] to the right. To attach the quiver to the bracket, insert the bottom quiver post into the bottom quiver bracket slot at 45 degrees [Pic.#2]. Rotate the quiver counter-clockwise until it locks into position.

NOTE: When arrows are installed, sliding the quiver forward or back may be required for quick detach removal.



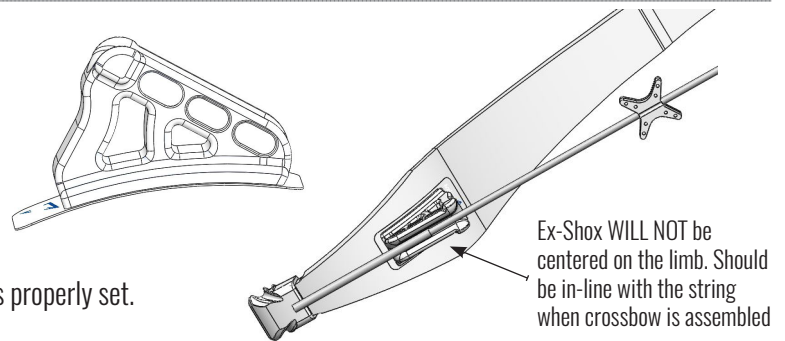
Pic.#1



Pic.#2

**Step 8:** Installation of EX-SHOX

1. Establish correct brace height. (see below)
2. Center string with groove down middle of the Ex-Shox.
3. Remove protective film.
4. Apply constant pressure to ensure adhesive sticks to the limb.
5. We recommend waiting 24 hours before use to ensure adhesive has properly set.



**NOTE: TO ENSURE OPTIMAL PERFORMANCE OF YOUR EXCALIBUR MICRO SUPPRESSOR CROSSBOW, THE BRACE HEIGHT SHOULD BE 1.5" TO 2".**

Brace height is measured from the joint where the riser meets the mainframe to the center of the string. As a quick check, the string should sit 1/8" to 5/8" from R.E.D.S. if installed. Excalibur's Crossbow Stringer #2096 is required to remove the string to adjust brace height or change strings. Please consult your Owner's Manual for more details. (above diagram not exact location)